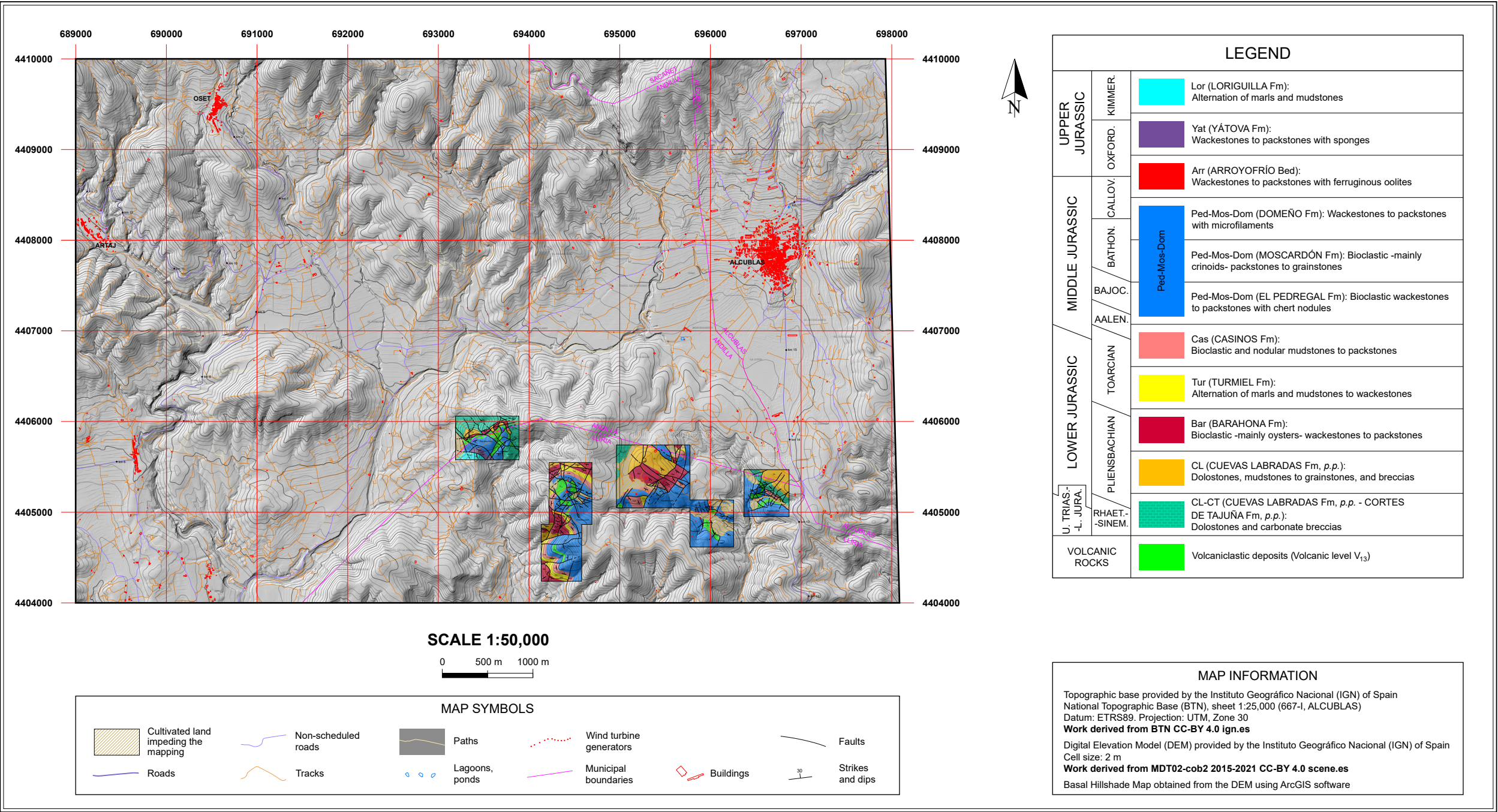


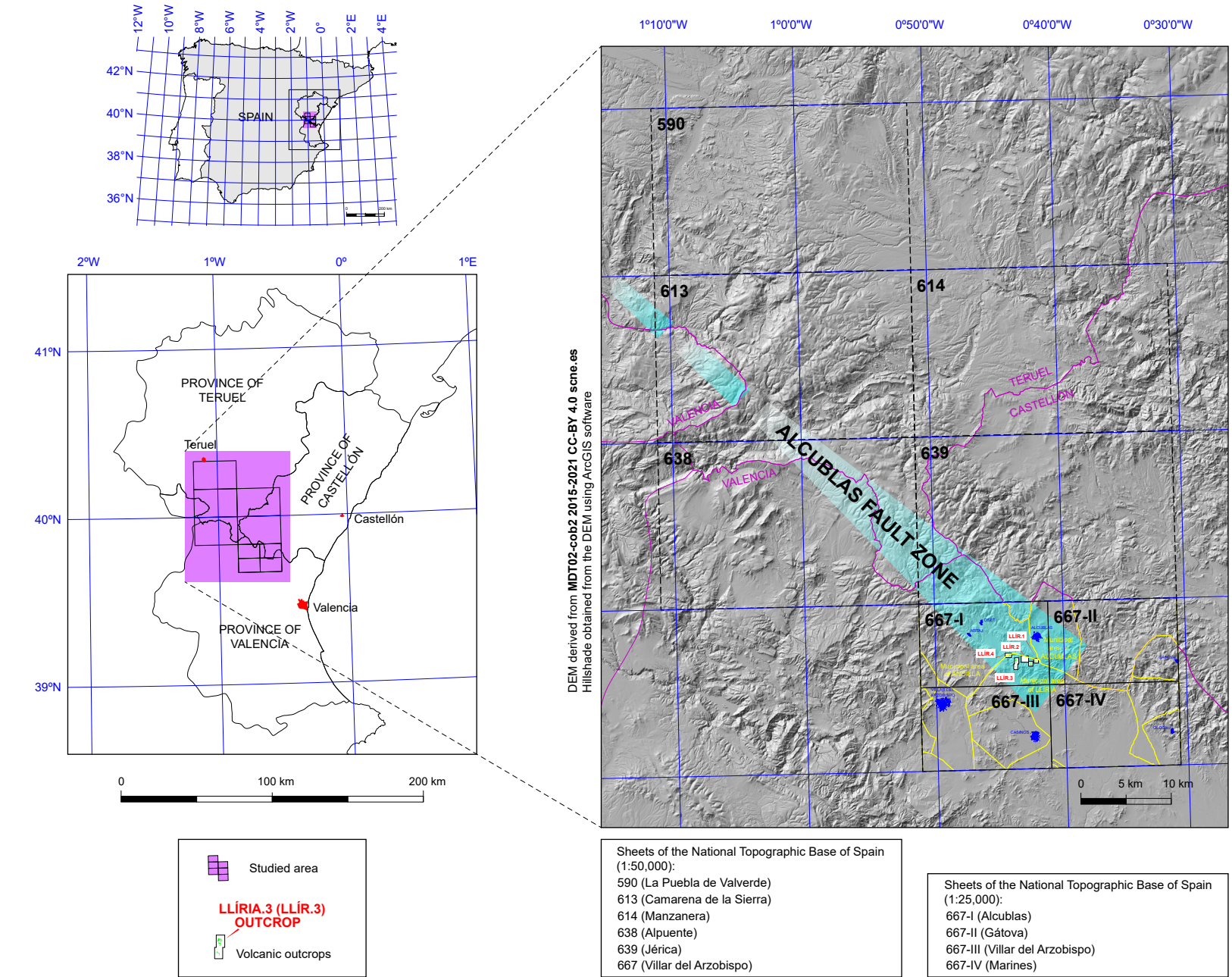
GEOLOGICAL MAP OF THE LLÍRIA.1, 2, 3, 4 OUTCROPS (SE IBERIAN RANGE, SPAIN)

J. EMILIO CORTÉS
Departamento de Geodinámica, Estratigrafía y Paleontología, Facultad de Ciencias Geológicas, Universidad Complutense de Madrid
jocortes@ucm.es

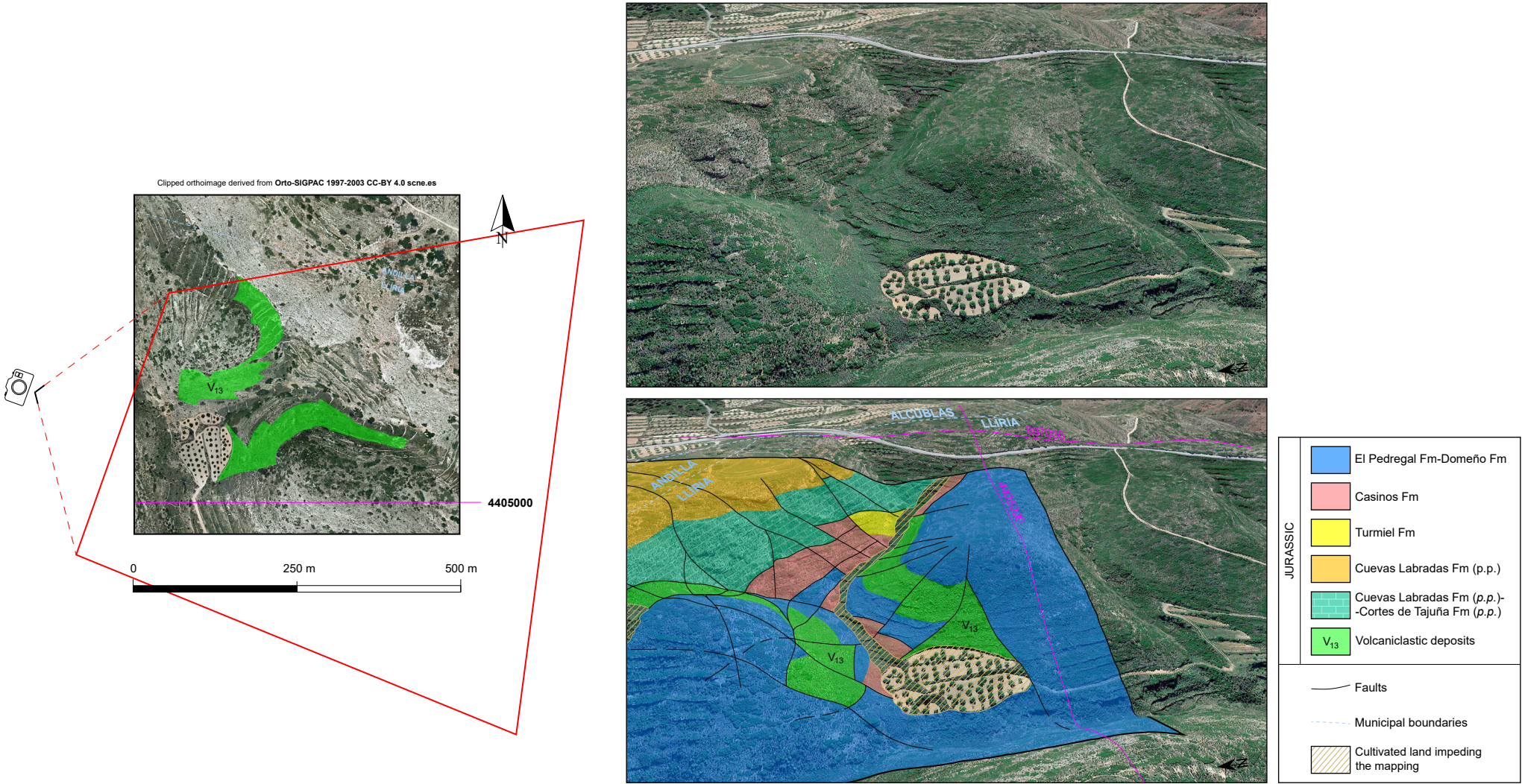
1) 2D GEOLOGICAL MAPS



2) REGIONAL LOCATION OF THE GEOLOGICAL MAPS



3) 3D GEOLOGICAL MAP (EASTERN PART OF THE LLÍRIA.1 OUTCROP) WITH GOOGLE EARTH



4) 3D GEOLOGICAL MAP (CENTRAL PART OF THE LLÍRIA.3 OUTCROP) WITH GOOGLE EARTH

